

### INSTALLATION INSTRUCTIONS

#### Important Information

- \* Not suitable for gravity feed systems.
- \* Outlet is fitted with a 3.78L/min flow regulated aerator (14). This low flow rate may not be suitable for connection to some Instantaneous Gas Water Heaters, some Tempering Valves, some Solar Water Heaters & some Thermostatic Mixing Valves. Check with the manufacturers of these products. If required, the 3.78L/min flow regulated aerator insert (14) can be replaced with a 5.0L/min flow regulated insert (15) (Supplied) to get higher flow rate (See "Replacing Aerator Insert").
- \* All pipework must be thoroughly flushed prior to installation, as foreign materials may block the flow regulating device and reduce the flow of water.

#### Swivel angle adjustment

- 1) Outlet is fitted with 140° limited swivel retainer (2). To suit single bowl installations, swivel limit can be changed by swapping the 140° retainer (2) with 70° retainer (3) following below steps :- Remove screw (1) using allen key (4) & pull out outlet (5) from housing (6), remove retainer (2) from retainer groove. See Fig. 1
- 2) From spare bag, fit retainer (3) into retainer groove in outlet assembly (5), insert outlet together with retainer (3) into housing, push it all the way down until the retainer (3) hole is aligned with the screw (1) hole, turn the outlet (5) if required to align the holes. Tighten the screw (1) using allen key (4). DO NOT OVERTIGHTEN.

#### Installation

- 1) Ensure 'O'ring (7) is fitted into groove in the housing (6), insert housing (6) through the hole in the deck. Adjust position of the outlet to ensure "CAROMA" logo facing forward as shown (Fig.1)
- 2) Fit washer (11) together with flat seal (10) over threaded tail of housing (6) as shown (Fig.1). Screw clamp ring (12) onto threaded tube until it contacts washer (11) & the flat seal (10) has contacted the underside of the deck. Tighten two screws (13) using a 3mm allen key until outlet is clamped firmly to the deck. DO NOT OVERTIGHTEN.
- 3) To suit the installed position of Remote hob mixer 99687, the connection elbow (9) can be rotated upto 360°. Loosen the two screws (8) slightly using 2.5mm allen key (4), rotate connection elbow (9) to required position, tighten two screws (8) to secure the new position of connection elbow (9).

#### Replacing Aerator Insert

- 1) Remove aerator insert (14) with the spanner (16) provided.
- 2) From spare bag fit 5.0L/min aerator insert into spout of outlet, tighten it with spanner (16).

IMPORTANT	
Pressure & Temperature Requirements.	
• Hot and cold water inlet pressures should be equal.	
• Static inlet pressure range : 150-1000 kPa	
New Regulation:- 500 kPa maximum static pressure at any outlet within a building. (Ref. AS/NZS 3500.1)	
• Maximum hot water temperature : 80°C.	
Deck Requirements	
• Deck thickness : 40mm maximum	
• Tap body hole (in deck) : Ø34-36mm	

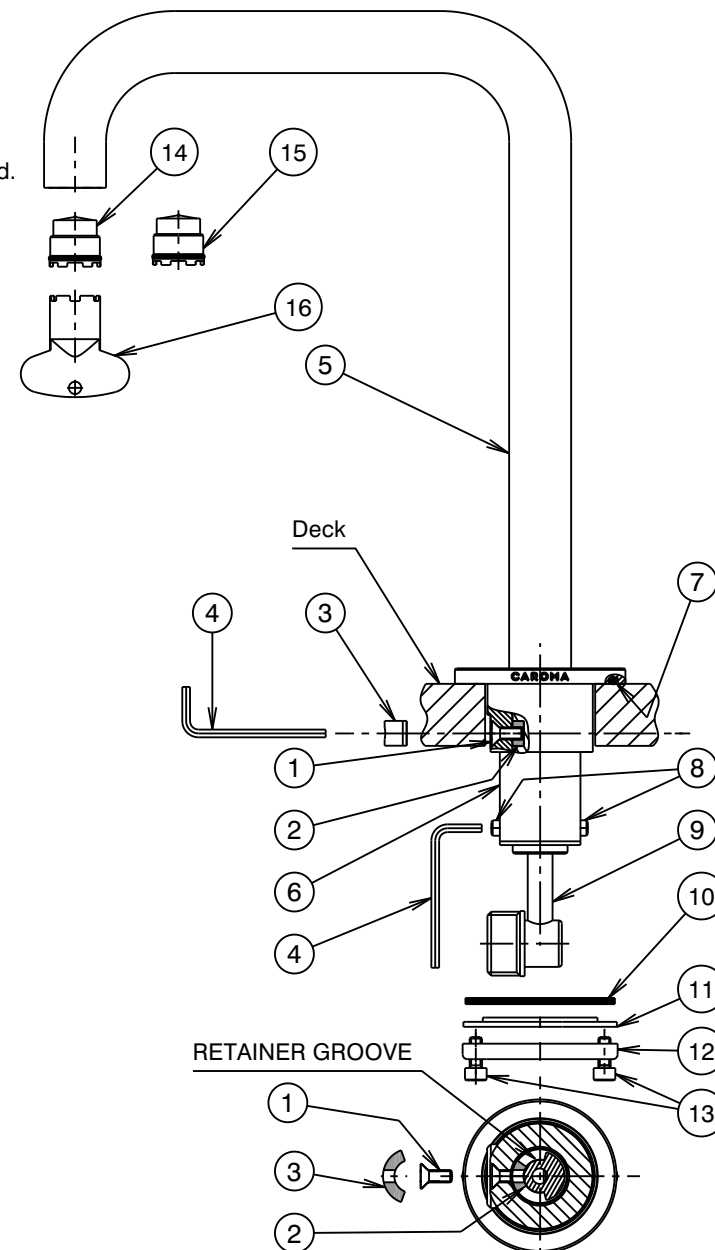


Fig. 1