

URBANE II 600 SHELF WALL BASIN INSTALLATION INSTRUCTIONS

PLEASE READ CAREFULLY BEFORE INSTALLATION

IMPORTANT

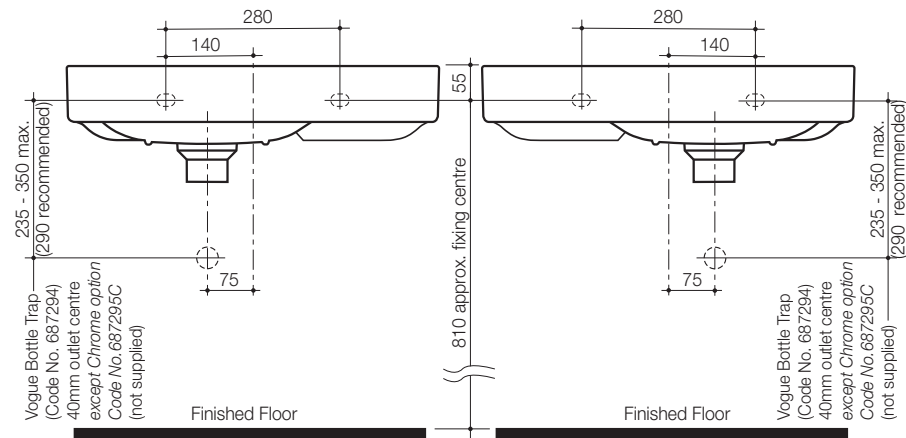
Roughing in for D.200 Basin Fixing Kit:

Reinforcement must be provided behind the finished wall for the basin wall fixing. For timber stud walls, noggins and studs must be positioned at a height to allow for the location of fasteners as detailed in **Fig. 1**.

BASIN INSTALLATION WITH D.200 BASIN FIXING KIT

- 1- Mark fixing screw hole position on finished wall at the recommended height as detailed in **Fig. 1**.
- 2- Drill two Ø12mm holes in masonry wall for expansion fasteners. For timber stud walls drill two Ø8mm holes for fixing screws.
- 3- Insert expansion fasteners into the drilled holes in masonry wall. The fixing screws should be screwed into the wall using the flat section of the fixing screw with a spanner as shown in **Fig. 3**. Allow 50mm of thread to protrude from the finished wall.
- 4- Locate basin onto the fixing screws on the wall. Insert plastic bushes, washers and fasten to wall with fixing nut to complete assembly as detailed in **Fig. 4**.
- 5- The plastic bush allows for levelling adjustment if required by rotating the hexagonal head bush, the basin will be slightly raised or lowered as shown in **Fig. 4**.
- 6- Fit taps and waste assembly to the basin.
- 7- Tighten fixing nuts and connect plumbing to complete the installation.

Modina and Eco 40mm Bottle Trap layout



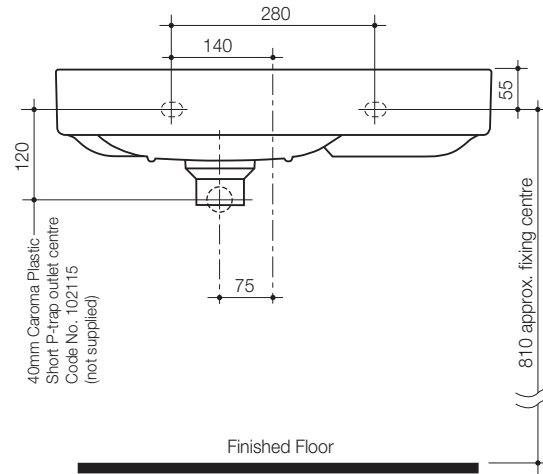
* RHS setout.

Fig. 2

* LHS setout.

D.200 Basin Fixing Kit

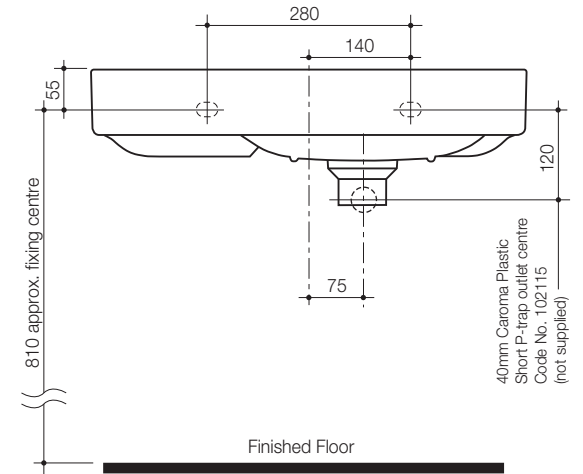
40mm Caroma Plastic Trap layout



* RHS setout.

Fig. 1

40mm Caroma Plastic Trap layout

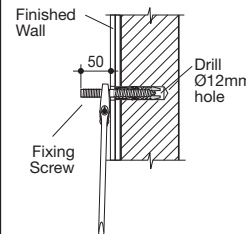


* LHS setout.

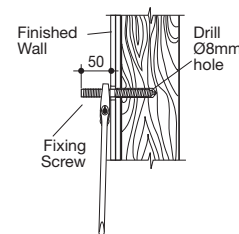
Installation must be in accordance with AS/NZS 3500.2

IMPORTANT:

Fixing Screw Masonry Walls Installation



Fixing Screw Timber Stud Walls Installation



D.200 Basin Fixing Kit

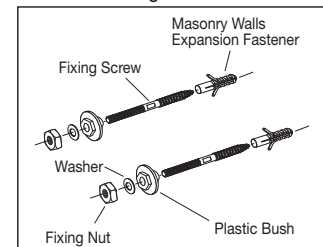


Fig. 3

D.200 Basin Fixing Kit Completed Installation

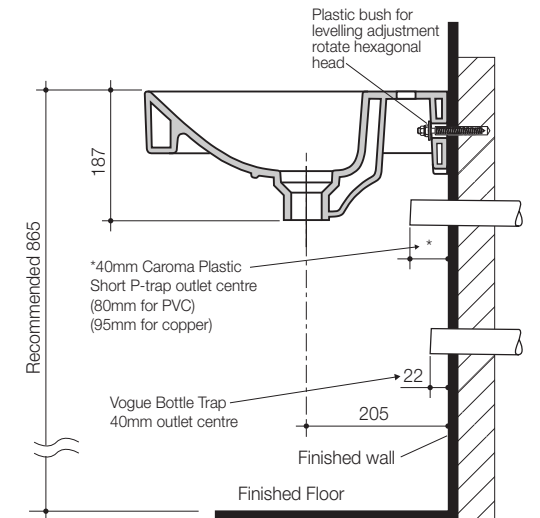


Fig. 4

All measurements are subject to accepted manufacturing tolerances. To ensure accuracy please check actual product dimensions before drilling for installation. The manufacturer reserves the right to change specifications at any time without giving prior notification. This product should be installed by a qualified plumber. Local authority, Water Board, and Building Regulations may apply to the installation of this product, and you should consult the appropriate bodies on these requirements.

Date of Issue: 16.06.2023
Issue No: 3