

CAROMA

Revision: 0
Date: 18/01/2024

Supersedes all previous issues

Contura II 530

Ceramic Inset Vanity Basin with Tap Landing

Nominal Size: 530mm x 360mm



CAROMA

Contura II 530

Ceramic Inset Vanity Basin

Basin Size: 530mm x 360mm (nominal)



Embrace natural luxury with the Caroma Contura Collection - sculptural design with an organic simplicity to create a sense of subtle indulgence for your bathroom. The basin is suitable for general purpose, domestic and commercial applications.

Tap Holes:

Basin available in: One taphole Code No.853410.

Waste Outlet:

The basin has been designed and supplied with an integrated waste with a ceramic pop up waste cap matched to the basin colour. Optional wastes are available with ceramic waste caps in 5 finishes, Matte Black (MB), Matte Green (MG), Matte Grey (MGR), Matte Pink (MP), Matte Speckled (MP). Code No.687350.

To colour match to tapware, optional wastes are available with brass waste caps in 6 finishes, Black (B), Brushed Brass (BB), Brushed Bronze (BBZ), Brushed Nickel (BN), Chrome (C) and Gunmetal Grey (GM). Code No.687330.

Bowl Capacity:

3.9 litres.

Overflow:

Overflow not available.

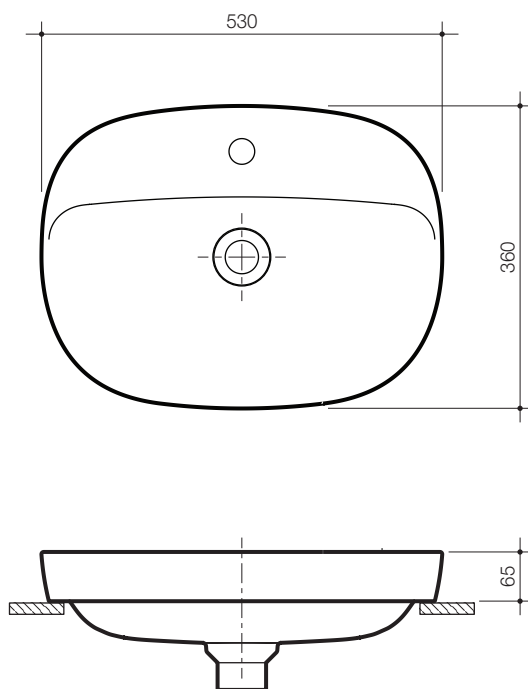
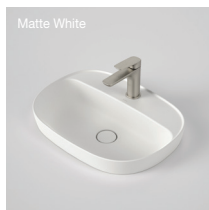
Fixing:

The underside of the basin rim must be sealed to the counter top with an acetic cured silicone sealant. **Epoxy type glues must not be used.** The basin is supplied with a template which must be used for the counter top cut-out.

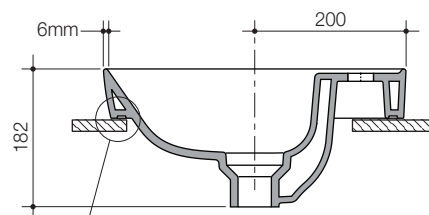
Colours:

White (W), Matte White (MW) and Clay (CL).

Other Basin Colour Options:



All dimensions are in millimetres and are subject to normal manufacturing variations.
Caroma pursues a policy of continuing improvement in design and performance of its products.
The right is therefore reserved to vary specifications without notice.



Acetic cured silicone sealant
IMPORTANT: Epoxy type
glues must not be used

