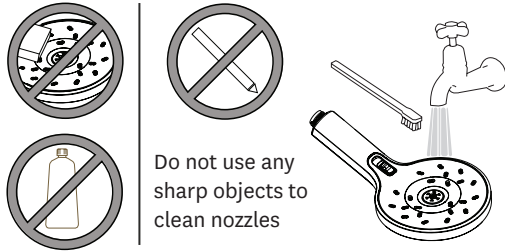


CLEANING

Water contains lime which remains on the surface after the water has evaporated. These lime deposits can be prevented from forming by wiping immediately after use.

To clean the chrome-plated surface use a soft cloth, soap and warm water. Never use cleaning agents that contain a corrosive acid or a scouring additive.



AMIO EXPOSURE RAIL SHOWER INSTALLATION GUIDE

15-3084

TECHNICAL SPECIFICATIONS

Operating Pressure:

Min: 150kPa

Max: 500kPa

Optimum: 150kPa - 500kPa

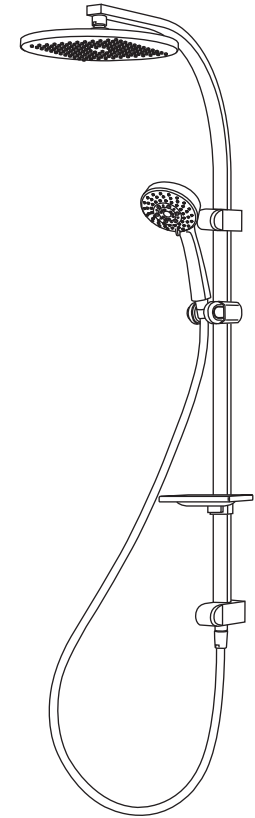
Operating Temperature:

Hot: Max 80°C

Cold: Min 5°C

* Regional specific regulations apply.

Please refer to your warranty statement at www.methven.com



Methven warrants this product against manufacturing defects and that it is suitable for use under the operating conditions specified in this instruction sheet.

For your warranty please refer to www.methven.com/au or call Customer Service

Australia
1300 638 483



