

GENERAL INFORMATION

- Alex group aus pty ltd reserves the right to make changes in product characteristics, packaging or availability at any time without notice.
- Please visit www.aulic.com.au for the latest information.

Aulic

AULIC

LED
Mirror

INSTALLATION INSTRUCTION

CARE, MAINTENANCE AND WARRANTY



THANK YOU FOR BUYING AULIC TOUCH FREE LED LIGHT MIRROR.

AT AULIC WE PRIDE OURSELVES IN SUPPLYING PRODUCTS WITH HIGH QUALITY.

TO ENSURE THIS MIRROR IS SAFELY FITTED AND PERFORMING ITS BEST OUTCOME, PLEASE READ THIS MANUAL CAREFULLY BEFORE INSTALLATION BEGINS.

INSTALLATION SAFETY INFORMATION

- This mirror must be installed by a licensed and registered electrician in accordance with local regulations.
- Make sure to check the product for any defects or damages before a installation takes place.
- Always to follow the manufacturer's instructions for installation and safety.

SAFETY INSTALLATION & USE GUIDE

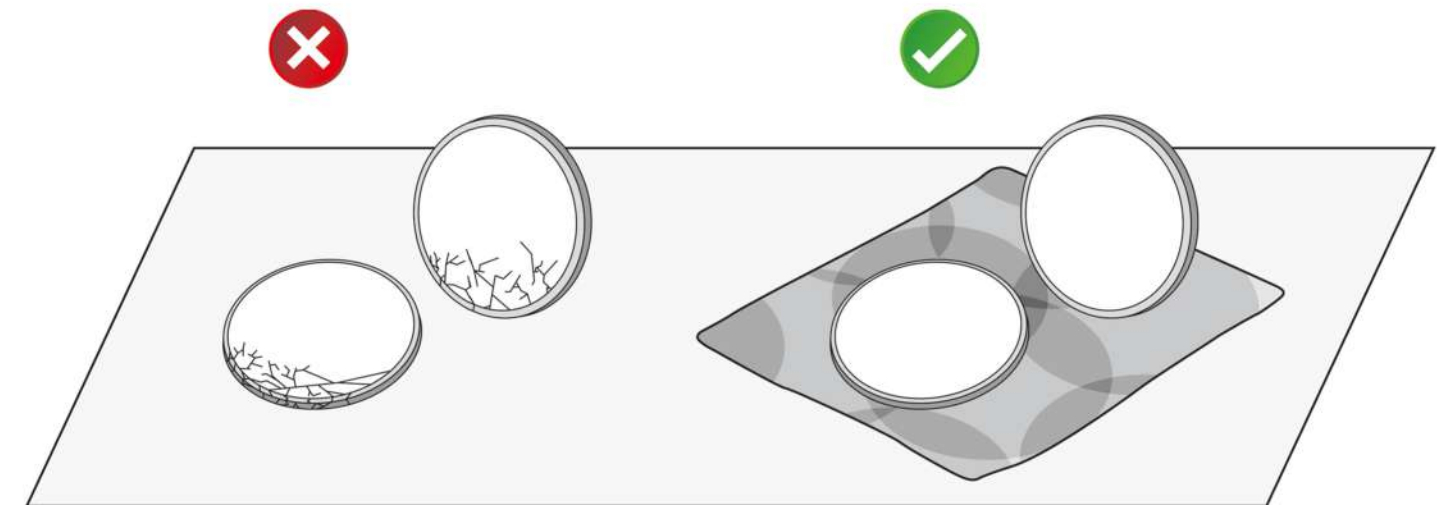
- Installation must be carried out by a licensed electrician in accordance with local regulations.
- Two-people is recommended to install this mirror.
- This mirror is not suitable to use in steam, saunas room. (refer to IP zone diagram)
- Warranty will not cover if any modification is made.
- Power circuit protection should be available for this mirror.
- This product is IP44 rated and could be installed in Zones 2 and outside of Zone in compliance with the IEEE regulations.

HANDLING TIPS



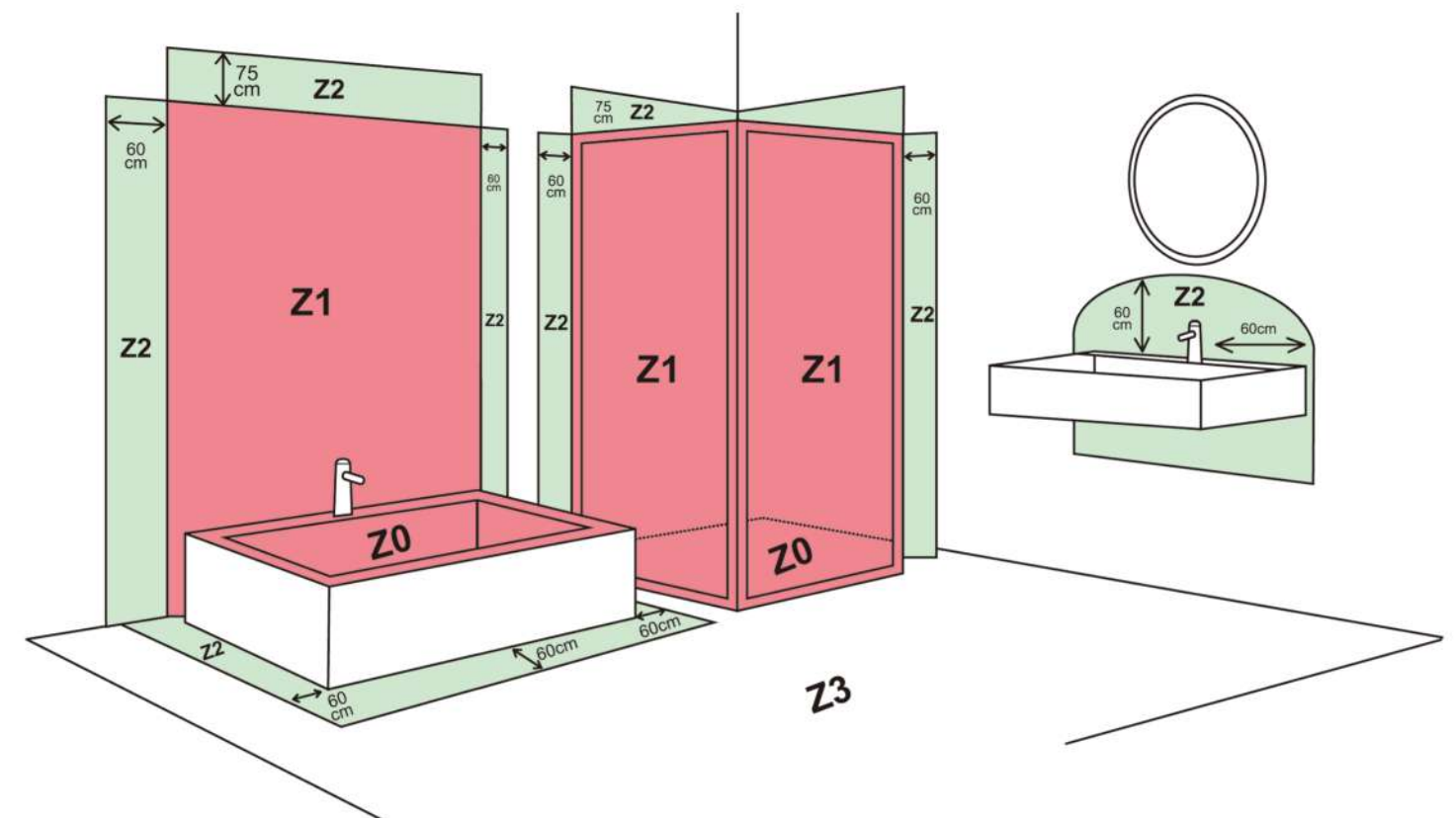
Aulic recommend not to place this mirror on a hard or rough surface.

Please measure carefully before installing the hanging system, use the appropriate wall fixings to install this mirror.



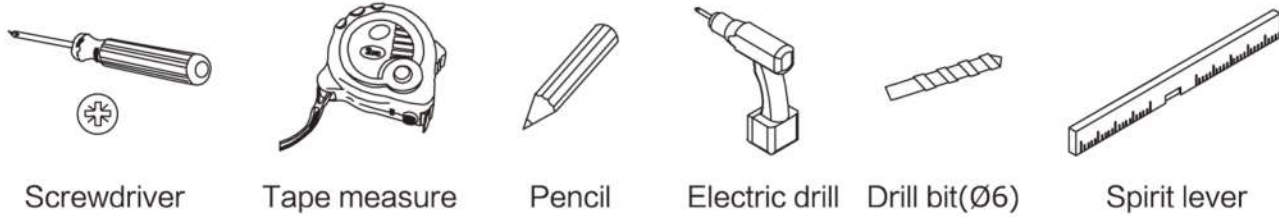
Aulic recommend not to place this mirror on a hard or rough surface.

IP44 ZONE DIAGRAM

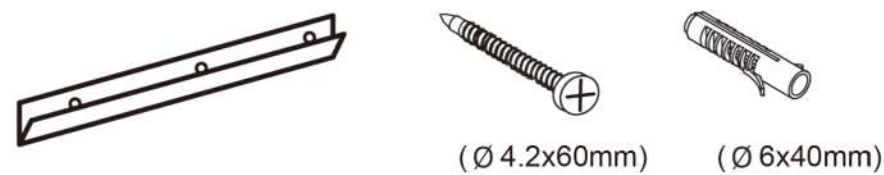


HANDLING TIPS

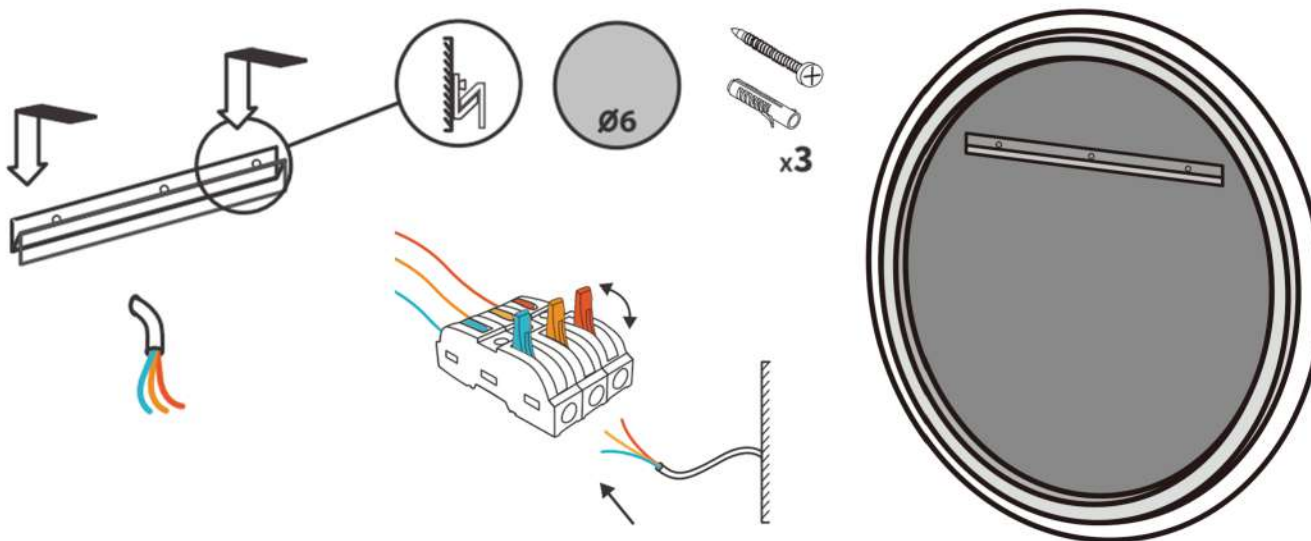
REQUIRED TOOLS



SUPPLIED SPARE PART



INSTALL



MIRROR OPERATION

The mirror is in touching less design, will effectively avoid fingerprints.



TURNING ON/OFF

- Wave your hand over the sensor to turn on / off your Led Light.



DIMMER

- Hold your hand at the sensor for light dimming.
(Hand scan distance: 1-5cm)



MIRROR DEMISTER

- This mirror comes with a build-in demister.
(Demister will be activated when Led Light is on)

MIRROR OPERATION

For a best result, clean the mirror with a combination of 30% isopropyl alcohol and 70% water and a soft, non-abrasive cloth designed for glass surface.